

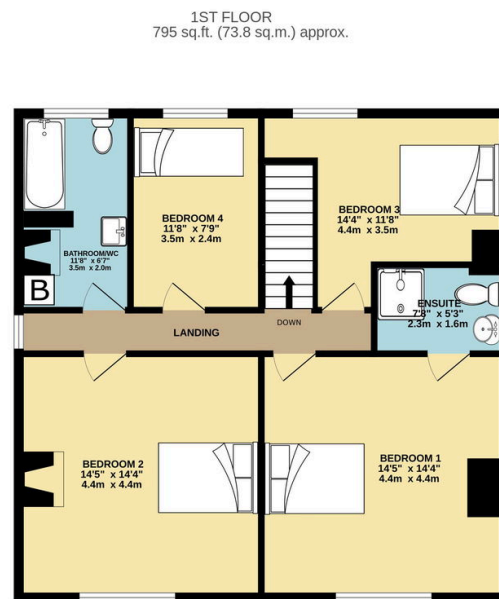
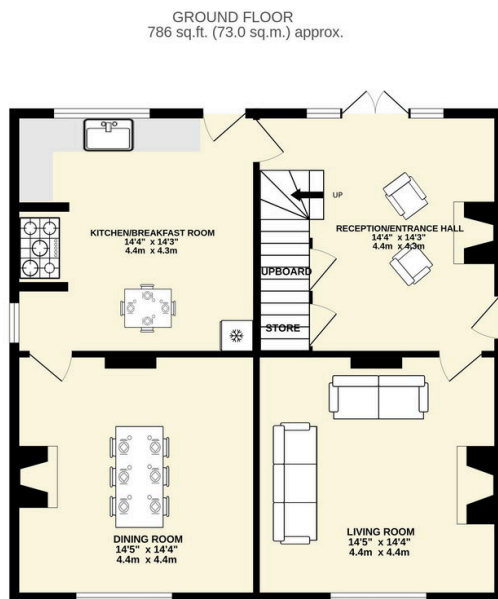
Fleming Road, Staple, Canterbury, CT3 1LQ

Guide Price £580,000

4 2 3



- Please quote reference DM0223
- Blending period style with modern living effortlessly
- Three reception rooms
- Stunning fully fitted kitchen
- Master bedroom with quality en-suite facilities
- Four bedroom detached village home
- Generous size accommodation
- Plenty of family and entertaining space
- In the rural village of Staple on the outskirts on both Canterbury and Sandwich
- Beautifully landscaped gardens



TOTAL FLOOR AREA: 1580 sq.ft. (146.8 sq.m.) approx.
 Whilst every attempt has been made to ensure the accuracy of the floorplan contained here, measurements of doors, windows, rooms and any other items are approximate and no responsibility is taken for any error, omission or mis-statement. This plan is for illustrative purposes only and should be used as such by any prospective purchaser. The services, systems and appliances shown have not been tested and no guarantee as to their operability or efficiency can be given.
 Made with Metropix ©2024

This beautiful four bedroom detached home blends period style with modern living effortlessly, located in the rural village of Staple